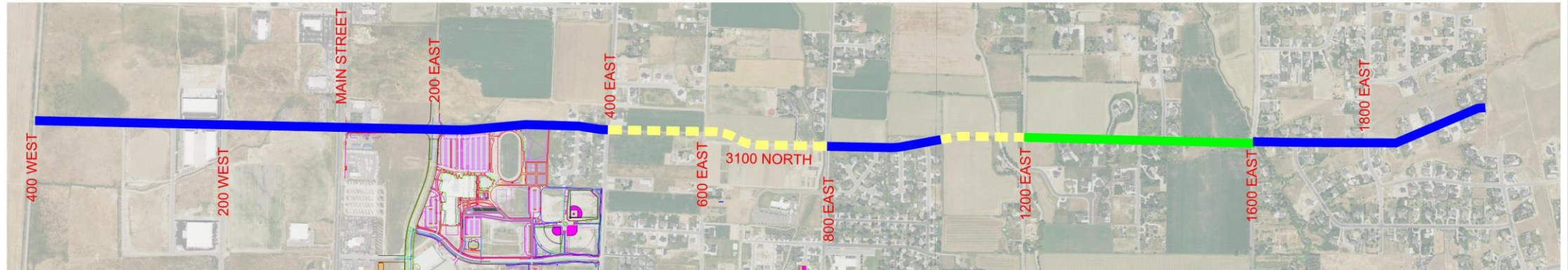




3100 N Road Improvements (Last Phase)

NORTH LOGAN CITY – 2018 COG APPLICATION

Project Overview



 **3100 NORTH**
SCALE: NTS

-  COG 2019
-  COG 2018
-  EXISTING

Project Overview – 3100N



1200 East to 1600 East



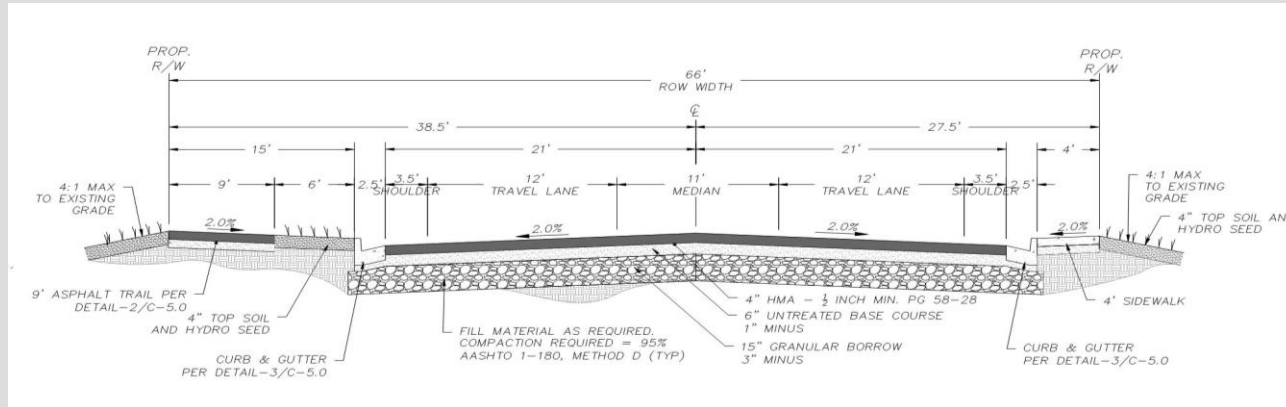
Purpose and Need (Last Phase)

- Regional Significance Road
 - North Logan and Hyde Park City Master Plans
 - Primary Collector (from 2000E to 450W, ~3.25 miles in length)
 - East West connector between 2200N and 3600N (200S in Hyde Park). ~1.2 miles
 - Key features along 3100N (Green Canyon High School, Highway 89/91, Large Commercial, Industrial, and Residential Sectors).
- Congestion
 - 2500 N 800 E Intersection
 - 2500 N 400 E Greenville Elementary
 - Current congestion concerns along multiple adjacent collectors (Hyde Park Lane, 2500 N, and 200 S in Hyde Park City)
 - Both 400E and 800E contain elementary schools (This collector will alleviate congestion at these two elementary schools).
- Safety
 - 3100N will serve as the primary transportation corridor for the majority of North Logan and Hyde Park residents to access Green Canyon High School, Wolfpack Way, and Main St.
 - Narrow Existing Road
 - 200 S (Hyde Park) and 2500 N

Proposed Road Design Elements



Developed Areas

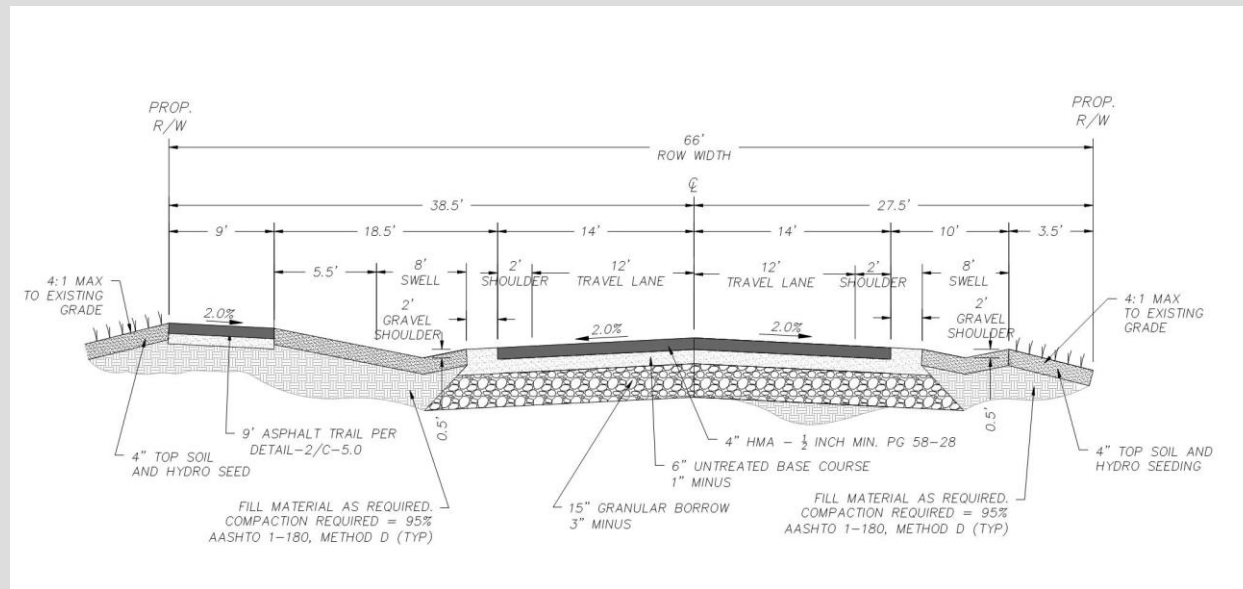


- 66 Ft Right-of-Way
- Travel lanes with a center turn lane
- 9' Asphalt Multi-use Path north side
- 6' park strip north side
- 4' sidewalk on south side
- Curb and Gutter (Betterment)

Proposed Road Design Elements

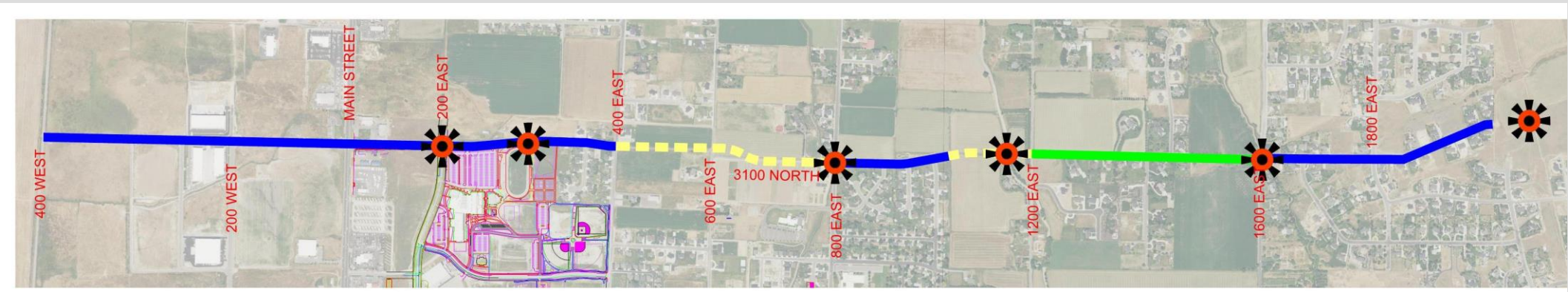


Undeveloped Areas



- 66 Ft Right-of-Way
- Two (2) 12' Travel lanes with 2' shoulders
- 8' Asphalt Multi-use Path (North Side)
- 8' park strip
- Curb & Gutter on north side (Betterment)
- Drainage swale south side

Multi Use Path Connectivity



- Three Canals connections
- Hyde Park Recreational Park (under construction 800 East)
- Cache Recreational Park/ Green Canyon HS/Meadow View Park/RSL Indoor Facility/Ice Arena
- 200 East (1.6 miles of trail already constructed)
- Future Connection to Power Line Trail
- Future Connection to Bonneville Shore Trail

Project Betterments by Cities



- Water Main
- Sewer Main
- Upsize of drainage system to accommodate overflows from upper Canal (1600 East) to middle Canal (1200 East)
- Curb and Gutter (south side only)

Funding Request Overview



COG REQUEST = **\$694,349.04**

Total Project Cost	\$ 1,298,275.53
◦ COG Eligible Costs	\$ 831,55.73
◦ Non-Eligible Betterments (400 E – 1200 East)	\$ 466,719.80
North Logan Contributions	
◦ Cash Contributions	\$ 137,206.70
◦ Non-Eligible Betterments	\$ 466,719.80
◦ Total City Contribution	\$ 603,926.49
❖ City Percentage Match (COG Eligible)	16.5%