

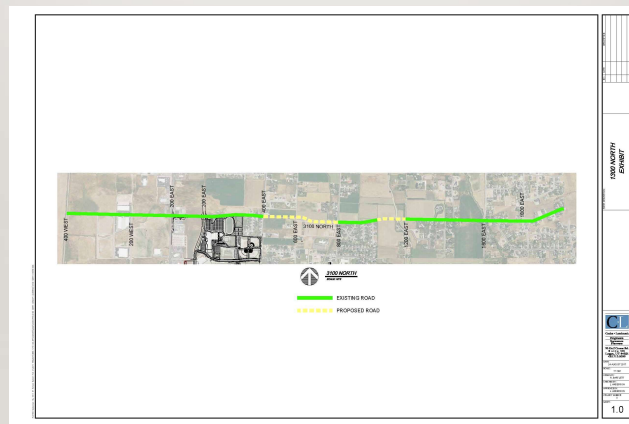


COG PROJECT APPLICATION

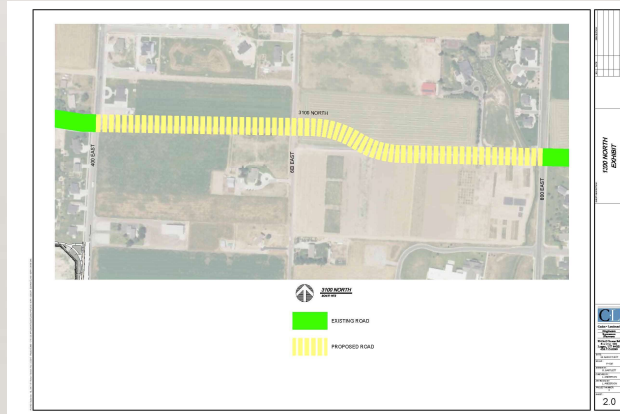
NORTH LOGAN CITY – 2017

3100N (400E TO 800E DESIGN & PROPERTY ACQUISITION)

PROJECT OVERVIEW



PROJECT OVERVIEW – 3100N



PROJECT OVERVIEW – 3100N



REGIONAL SIGNIFICANCE – CORRIDOR PRESERVATION



- CMPO PRIORITY ROADWAY
- Included on two previous regional studies
- Primary Collector (from 2000E to 450W, ~3.25 miles in length)
- It would serve as the only east west connector between 2200N and 3600N (200S in Hyde Park).
- Key features along 3100N (Green Canyon High School, Highway 89/91, Large Commercial, Industrial, and Residential Sectors).

CONGESTION



- 3100N will serve as the primary transportation corridor for the majority of North Logan and Hyde Park residents to access Green Canyon High School, Wolfpack Way, and Main St.
- Current congestion concerns along multiple adjacent collectors (2200N, 1900N, 2500N, 2700N, and 200S in Hyde Park City).
- Both 400E and 800E contain elementary schools (This collector will alleviate congestion at these two elementary schools).

SAFETY



-
- 3100N Main St. Intersection (New Traffic Light Warranted)
 - Access to Green Canyon High School
 - Alleviate traffic surrounding elementary schools.
 - Increase safety at multiple intersections (800E 2500N, 3600N 1600E, 400E 2500N, 2850N 400E, 3100N 400E, 2850N 800E, 2700N 1600E, 3100N Main St., 2850N Main St.).

FUNDING REQUEST OVERVIEW



-
- COG REQUEST = \$350,000
 - Design of 3100N from 400E to 800E, along with ROW acquisition.
 - NORTH LOGAN CITY MATCH = \$35,000 (10% Match)