

# CMPO

Cache Metropolitan Planning Organization

## Transportation Improvement Program (TIP)

2016-2021

DRAFT

### The TIP

#### What is the TIP?

- The TIP programs transportation projects using federal funds in the Cache MPO Area and the remainder of Cache County

#### When are the projects going to be Initiated or Completed?

- Between 2016 and 2021

#### When can I comment?

- Public comment period July 10 to August 12 ,2015
- Public Meeting to consider approval scheduled for August

#### When is it final?

- When approved by the CMPO
- UDOT Approval Scheduled October 2015
- The TIP can be amended at any time

“Connecting Cache Valley since 1992”

### Send Comments to:

CMPO  
179 N. Main, Suite 305  
Logan, UT 84321  
[input@cachempo.org](mailto:input@cachempo.org)  
[www.cachempo.org](http://www.cachempo.org)



Prepared in Cooperation with:

Utah Department of Transportation (UDOT), Federal Highway Administration (FHWA), Federal Transit Administration (FTA), Cache Valley Transit District (CVTD), Cache County, Hyde Park, Hyrum, Logan, Millville, Nibley, North Logan, Providence, River Heights, Smithfield, and Wellsville

## CMPO Executive Council

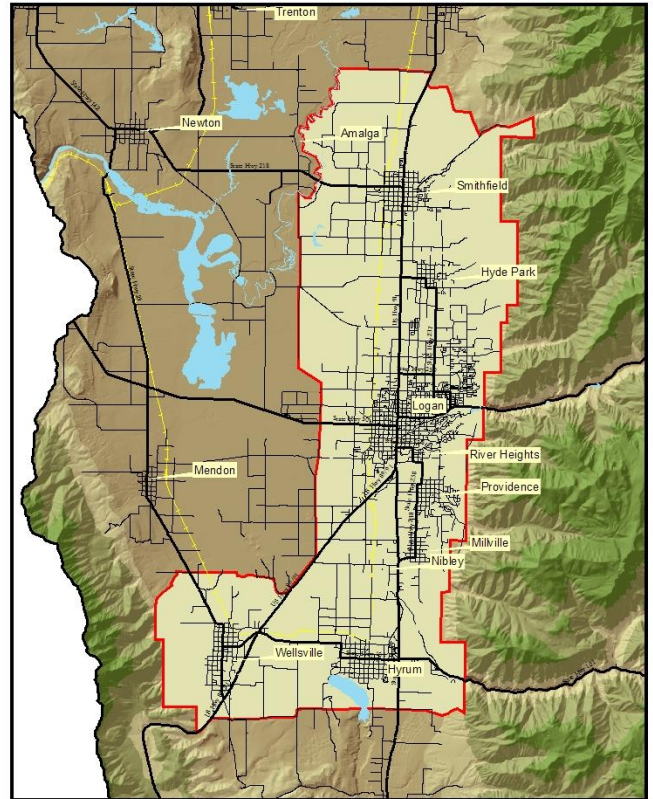
- Chair: Todd Beutler, CVTD Transit Manager
- Vice Chair: Lloyd Berentzen, North Logan
- Mayor Don Calderwood, Providence
- County Executive Lynn Lemon, Cache County
- Mayor Shaun Dustin, Nibley
- Mayor Bryan Cox, Hyde Park
- Wayne Barlow, Utah Transportation Commissioner
- Holly Daines, Logan City Council
- Mayor Craig Petersen, Logan
- Mayor Thomas Bailey, Wellsville
- Mayor Darrell Simmons, Smithfield
- Mayor Stephanie Miller, Hyrum
- Mayor Mike Johnson, Millville
- Mayor James Brackner, River Heights

## Cache Technical Advisory Committee

- Jim Gass, Smithfield
- Bill Young, Logan
- Randy Parks, Transit
- Josh Runhaar, Cache County
- Scarlet Bankhead, Providence
- David Zook, Nibley
- Ron Salvesen, Hyrum
- Cordell Batt, North Logan
- Reed Elder, Hyde Park
- Don Hartle, Wellsville
- Elden Bingham, UDOT
- Dave Adamson, UDOT
- Steve Call, FHWA

Executive Director: James P. Gass

Staff: Jeff Gilbert, Transportation Planner



Cache Metropolitan Planning Organization  
Planning Boundary



# 2016-2021 CMPO Transportation Improvement Program

## **INTRODUCTION**

Federal law requires Transportation Improvement Programs (TIPs) for all metropolitan areas exceeding 50,000 population. TIP's are developed by Metropolitan Planning Organizations designated by the Governor. The Cache Metropolitan Planning Organization (CMPO) serves the Logan Urbanized Area (see map on previous page).

## **Metropolitan Planning Organizations**

M.P.O.'s have the responsibility for preparing and approving Transportation Improvement Programs for their respective urbanized areas. Specific factors, which must be considered in their long range planning and TIP development, are mandated by the federal requirements under the Safe, Accountable, Flexible, Efficient Transportation Equity Act: A Legacy for Users (SAFETEA-LU). This responsibility continues through the Moving Ahead for Progress in the 21<sup>st</sup> Century (MAP-21) signed by President Obama July 6, 2012.

## **Transportation Improvement Program (TIP)**

The Cache Metropolitan Planning Organization's Transportation Improvement Program (TIP) is a six-year program which plans for the development of collector type roads of regional importance, highway, transit, pedestrian, and bicycle projects for the urbanized area. It is a compilation of projects from the various federal, state, and local funding programs for all the cities in the Region, as well as for the Utah Department of Transportation and the Cache Valley Transit Districts. Projects included in the program will implement the Long Range Highway and Transit Plans for the Region, meet the short range needs of the area, and provide for the maintenance of the existing transportation system. The Logan Urbanized Area includes: Wellsville, Hyrum, Nibley Millville, Providence, River Heights, Logan, North Logan, Hyde Park, Smithfield, and Cache County.

The Cache Metropolitan Planning Organization has the responsibility of preparing and approving a TIP for the Region annually. This is a requirement of the Federal Highway Administration (FHWA) and the Federal Transit Administration (FTA). Both agencies require that federally funded transportation projects located in a Metropolitan Area be included in a Transportation Improvement Program.

## **TRANSPORTATION PLANNING PROCESS**

A major responsibility of the Cache Metropolitan Planning Organization (CMPO) is the development of a Long Range Transportation Plan for the Logan Urbanized Area (LUA) (see [www.cachempo.org](http://www.cachempo.org)). This plan deals with highway networks, transit service, and pedestrian and bicycling demands. These plans are based on projected population increases and employment trends. They are designed to satisfy the mobility needs of citizens of the Logan Urbanized Area (LUA).

The second product is a Transportation Improvement Program (TIP), which is a four-year capital improvement program for highway, bicycle/pedestrian and transit projects in the area to implement the recommendations of the Transportation Plan. Both the Transportation Plan and the TIP must be approved by the CMPO. The Transportation Plan is updated on a regular basis, at least every four years, while the TIP is approved annually.

The CMPO assists the local governments and transit agency providers of the region in implementing projects of the TIP by programming federal funding for the projects. The CMPO administers Surface Transportation Program (STP) funds for the Region. STP funds may be used for transportation facility improvements ranging from rehabilitation of existing facilities to new construction. Funds may also be used for transit capital improvements and ride share promotion.

## **Statewide Transportation Improvement Program (STIP)**

The Statewide Transportation Improvement Program is developed through a cooperative process between the Utah Department of Transportation, Metropolitan Planning Organizations, Federal, City, and County Governments. The STIP is the statewide counterpart to the TIP (projects developed by the MPO's for their respective TIP's are also included in the STIP).

### **Public Involvement**

The CMPO encourages public involvement and input at every stage of the planning and project development process. Public comment is received at any time during the year on any aspect of the CMPO's planning effort. Written comments received by mail, email or via the CMPO's website will be compiled and considered with the next TIP adoption cycle. In addition, a formal 30 day written comment period is provided just prior to the TIP's adoption.

Copies of the proposed TIP and STIP are made available on CMPO's and UDOT's web sites for all interested [www.cachempo.org](http://www.cachempo.org) & [www.udot.utah.gov](http://www.udot.utah.gov).

## **FEDERAL AID TRANSPORTATION FUNDING**

The TIP is developed in compliance with Federal Highway Administration (FHWA) and Federal Transit Administration (FTA) regulations within the Safe, Accountable, Flexible, Efficient Transportation Equity Act: A Legacy for Users (SAFETEA-LU). Federally funded projects in the TIP follow these regulations.

### **Federal Funds Programmed by the Cache Metropolitan Planning Organization**

**AMERICAN RECOVERY AND REINVESTMENT ACT OF 2009 (ARRA)** The CMPO received one time funds distributed by formula to program toward transportation projects that will provide immediate economic and job creation impact. These funds do not require any local match.

**SURFACE TRANSPORTATION (STP) FUNDS:** The CMPO receives an allocation of these funds annually (by formula) to program toward the highest priority projects in the region. Funds may be spent on any road that is functionally classified as a collector or higher for roadways within the MPO area. Projects include rehabilitation, new construction, corridor and environmental studies and bridge replacement. Eligible non-road projects include planning studies, pedestrian and bike improvements, trails, transit projects, signal coordination, and administrative purposes.

**CONGESTION MITIGATION/AIR QUALITY (CM/AQ) FUNDS:** These funds are for projects, which can be proven to reduce traffic congestion and/or improve air quality in non-attainment areas. Projects such as park and ride lots, signal coordination, trails and pedestrian facilities, and rideshare qualify for these funds. Demonstration of the projects air quality benefit must be shown in order to be eligible for this fund.

**HIGH PRIORITY PROJECTS (HPP) / TRANSPORTATION IMPROVEMENTS:** These programs provide funding for specific projects (commonly referred to as "demonstration" or "earmark" projects) identified by Congress. SAFETEA-LU programmed over \$8 million to projects within Cache County. Additionally, funds are still available under an "earmark" from the previous TEA-21 Transportation bill that are programmed in this TIP.

**FEDERAL TRANSIT ADMINISTRATION (FTA) SECTION 5310 & 5317 PROGRAMS:** Referred to as the "Job Access and Reverse Commute" (JARC) and the "New Freedom" Program these funds are to be used to encourage services and facility improvements to address the transportation needs of persons with disabilities that go beyond those required by the Americans with Disabilities Act (JARC) and support development and maintenance of job access projects designed to transport welfare recipients (New Freedom). The details of distribution are still being determined statewide. The funds will likely be administered by UDOT with the CMPO

overseeing a competitive grant application program for eligible recipients.

## **Federal Funds Programmed by the Utah Department of Transportation (UDOT)**

Refer to [https://j2ee.udot.utah.gov/reports/rwservlet?epm+report=epm381\\_plan\\_fund.rdf](https://j2ee.udot.utah.gov/reports/rwservlet?epm+report=epm381_plan_fund.rdf) for a detailed listing of all UDOT funding codes.

**BRIDGE REPLACEMENT PROGRAM:** This program provides funds for the replacement of substandard bridges, both on and off federal-aid systems. Bridges must have a span of 20 feet in order to be eligible to receive these funds. UDOT evaluates all eligible bridges in the state and bridges with a sufficiency rating less than 50 are eligible to receive funding on a first-come, first-served basis. UDOT re-inventories the bridges about every two years. The State Transportation Commission has established a policy that 65% of these funds are used for bridges on the state system with the remaining 35% being used for bridges under local jurisdiction. Application is made to the Joint Highway Committee for all local jurisdictions.

**ENHANCEMENTS:** There are ten types of Enhancements, which include historic preservation, bicycle and pedestrian facilities, transit, water runoff mitigation, and safety projects including hazard elimination, railroad crossings, and railroad protective devices. Application is made to UDOT annually and projects are recommended for funding by a UDOT advisory committee.

**FEDERAL TRANSIT ADMINISTRATION (FTA) SECTION 5310 PROGRAM:** This program provides funding to private non-profit agencies for capital improvements for the provision of transportation services to elderly and disabled persons. UDOT established a committee to review project applications and to make recommendations for these funds. UDOT applies to FTA for approval to fund the recommended projects.

**FEDERAL TRANSIT ADMINISTRATION (FTA) SECTION 5311 PROGRAM:** This program provides funding to enhance access by people in non-urban areas to health care, shopping, education, employment, public services and recreation and to assist in the maintenance, development, improvement, and use of public transportation in rural and small urban areas.

**NATIONAL HIGHWAY SYSTEM (NHS):** This funding category can only be used by UDOT and includes all interstate and other major U.S. routes and state highways.

**NON-URBAN AREA STP:** These funds may be spent on projects within cities that are outside of urbanized areas and that have a population under 5,000 as part of the STP program. Local jurisdictions outside the urbanized area can apply for these funds through the Joint Highway Committee.

**RAILROAD CROSSINGS / RAILROAD PROTECTIVE DEVICES:** These funds may be spent on railroad crossings statewide for modernization and safety improvements. Local jurisdictions can apply for these funds through the Joint Highway Committee.

**SMALL URBAN AREA STP:** These funds may be spent on projects within cities that have a population between 5,000 and 50,000 and are outside of urbanized areas. It is part of the STP program. Local jurisdictions can apply for these funds through the Joint Highway Committee.

## **Federal Funds Programmed by the Cache Valley Transit Districts (CVTD)**

**FEDERAL TRANSIT ADMINISTRATION (FTA) SECTION 5307 PROGRAM:** This fund can be used for operating and capital cost and for eligible preventive maintenance costs. The funding is distributed annually by apportionment based on population, population density, and bus revenue miles of service. CVTD applies directly to the Federal Transit Administration for these funds.

**FEDERAL TRANSIT ADMINISTRATION (FTA) SECTION 5339 PROGRAM:** This program provides discretionary funding for capital improvement projects such as the purchase of buses or the construction of operating and maintenance facilities. FTA allocates these funds throughout the country on the basis of need. CVTD applies directly to FTA to receive approval for these funds. This fund is purely discretionary and is usually approved in the fall of each year, after the publication of the TIP. The projects listed in the TIP funded with FTA 5339 funds are shown for illustrative purposes only. If any of these projects are awarded funding, the TIP will be amended to show these changes.

## State Funds Programmed by the Utah Department of Transportation (UDOT)

**CENTENNIAL HIGHWAY FUNDS:** This fund was appropriated by the 1997 State Legislature for reconstruction of I-15 in Salt Lake County and other statewide high priority projects. This is designated by law as Centennial Highway Fund and is funded by a state 5-cent gas tax, an increase in vehicle registration, diesel fuel tax, and appropriations from the general fund by the legislature.

**STATE CONSTRUCTION FUNDS:** This fund includes motor fuel taxes, special fuel taxes, vehicle registration fees, and drivers' license fees. UDOT programs projects utilizing this fund for resurfacing and rehabilitation to new construction.

**STATE TRAFFIC FUNDS:** This fund has the same sources as the State Construction funds and is for UDOT traffic signal projects.

## Non-Federal Cash Match Requirements

As the sponsor of a federally funded project the CMPO, UDOT, CVTD, and municipalities have to pay a percentage of the projects total cost. This is referred to in the TIP as the Cash Match. Different funds have different cash match percentages and are listed below (the three State funding sources do not have a cash match).

### 80/20% Federal/Local Match

- Enhancement Funds
- FTA Section 5307
- FTA Section 5309Yy
- FTA Section 5310
- Bridge Replacement Program
- High Priority Projects

### 93.23/6.77% Federal/Local Match

- Any Area STP
- Congestion Mitigation/Air Quality
- Minimum Guarantee
- National Highway System
- Urban Area STP
- Railroad Crossings
- Recreational Trails
- Small and Non Urban
- TCSP

## Air Quality Transportation Conformity

The Transportation Equity Act (TEA-21) and the Clean Air Act Amendments (CAAA) require that all regionally significant highway and transit projects in air quality nonattainment and maintenance areas be derived from a "conforming" Transportation Plan (Plan) and Transportation Improvement Program (TIP). A conforming Plan or Program is one which has been analyzed for emissions of controlled air pollutants and found to satisfy emission level limits established in the State Implementation Plan (SIP) for air quality. This conformity analysis is made by the Cache Metropolitan Planning Organization (MPO) to be submitted to the Federal Highway Administration and the Federal Transit Administration for their concurrence.

Section 93.122(g)(1) of the 2010 Conformity Regulations (40 CFR part 93) states "Conformity determinations for a new ... TIP may be demonstrated to satisfy the requirements of.... Section 93.119 ("Interim emissions in areas without motor vehicle emissions budgets") without new regional emissions analysis if the previous

regional emissions analysis also applies to the new ... TIP.” The CMPO 2016-2021 TIP meets the conditions of CFR 93.122(g)(1) and therefore conforms to Transportation Conformity Regulations for particulate emissions and NOx precursor emissions in the Cache PM2.5 non-attainment area. Therefore, all the transportation projects in Cache County included in the 2016-2021 TIP may be found to conform (See Air Quality Conformity Memorandum 2016TIP-1). All projects included in this TIP were part of the regional air quality conformity report analysis conducted for the CMPO’s 2035 Regional Transportation Plan.

## Road Projects

### Logan Urbanized Area/Cache County\*

Project Location	Sponsor	Project Concept	PIN	Fund Source	Approved Funds					Concept Development	Federal Aid	State	Local	Total
					Prior Oblig.	2016	2017	2018	2019					
<b>200 East, Logan;</b>														
Center to 300 So , Logan	Logan	Road improvement and widening	5469	EM_HPP_1702	\$5,355,414						\$4,284,331		\$1,071,083	\$5,355,414
Center to 300 So , Logan	Logan	City Requested Betterments	5469	Logan_Betterment		\$460,348							\$460,348	\$460,348
Center to 300 So , Logan	Logan	Road improvement and widening	5469	STP_SU_CMPO	\$4,000,000						\$3,729,200		\$270,800	\$4,000,000
Center to 300 So , Logan	Logan	Road improvement and widening	5469	STP_FLX_CMPO	\$1,000,000						\$932,300		\$67,700	\$1,000,000
<b>LOGAN SUB-TOTAL</b>											<b>\$8,945,831</b>	<b>\$0</b>	<b>\$1,869,931</b>	<b>\$10,815,762</b>
<b>200 East, No Logan &amp; Hyde Park;</b>														
1400 N. to Hyde Park Lane	No. Logan/HP	Road Right of Way Purchase & Design	10399	STP_FLX_CMPO	\$610,102						\$610,102			\$610,102
1400 N. to Hyde Park Lane	No. Logan/HP	Road Right of Way Purchase & Design	10399	No. Logan In-kind	\$67,700								\$67,700	\$67,700
2200 N. to 3100 N.	No. Logan	Construct 3 lane (new road extension)	10400	STP_FLX_CMPO	\$1,484,929	\$2,509,201					\$3,994,130			\$3,994,130
2200 N. to 3100 N.	No. Logan	Construct 3 lane (new road extension)	10400	STP_SU_CMPO	\$1,167,972	\$2,733,087					\$3,901,059			\$3,901,059
2200 N. to 3100 N.	No. Logan	Construct 3 lane (new road extension)	10400	No. Logan In-kind	\$332,053								\$332,053	\$332,053
2200 N. to 3100 N.	No. Logan	Construct 3 lane (new road extension)	10400	Local_Govt	\$1,431,341								\$1,431,341	\$1,431,341
<b>NO. LOGAN/HP SUB-TOTAL</b>											<b>\$8,505,291</b>	<b>\$0</b>	<b>\$1,831,094</b>	<b>\$10,336,385</b>
<b>200 EAST PROJECT(S) TOTAL</b>											<b>\$17,451,122</b>	<b>\$0</b>	<b>\$3,701,025</b>	<b>\$21,152,147</b>
<b>FY 2016 CMPO Planning Funds</b>														
Approved Work Program for CPG	CMPO	Carry out approved 2016 work program	11961	PL_CMPO	\$151,033						\$151,033			\$151,033
Local Match for all CMPO Planning Funds	CMPO	Carry out approved 2016 work program	11961	L-Pass_match	\$12,998								\$12,998	\$12,998
Public Transit Planning Funds	CMPO	Carry out approved 2016 work program	11961	FTA_5303	\$38,549						\$38,549			\$38,549
<b>PLANNING PROJECT(S) TOTAL</b>											<b>\$189,582</b>	<b>\$0</b>	<b>\$12,998</b>	<b>\$202,580</b>
<b>Bridge Rehabilitation</b>														
Avon, Lewiston & Newton	UDOT	Preservation	10883	STP-BR	\$105,000	\$1,020,000					\$1,048,838		\$76,163	\$1,125,000
<b>West SR 30</b>														
SR 252 to I-15	UDOT	Environmental	13224	TIF		\$2,000,000						\$2,000,000		\$2,000,000
<b>UDOT PROJECT(S) TOTAL</b>											<b>\$1,048,838</b>	<b>\$2,000,000</b>	<b>\$76,163</b>	<b>\$1,125,000</b>
<b>2012 Funded COG Sales Tax Projects (non-federal PROJECTS NOT TO BE INCLUDED IN STIP)</b>														
South Hwy 89/91 Corridor	Cache Co	Purchase of Access and ROW		COG-Sales Tax	\$500,000								\$500,000	\$500,000
1700 South, Hwy 165 to Logan River	Cache Co	Widening and reconstruction		COG-Sales Tax	\$1,324,681								\$1,324,681	\$1,324,681
<b>2013 Funded COG Sales Tax Projects (non-federal PROJECTS NOT TO BE INCLUDED IN STIP)</b>														
200 East, 2200 N to 3100 N	No Logan	Road Construction		COG-Sales Tax	\$865,076								\$865,076	\$865,076
1700 South, Hwy 165 to Logan River	Cache Co	Widening and reconstruction		COG-Sales Tax	\$2,132,945								\$2,132,945	\$2,132,945
4200 N. Hwy 91	Cache Co	Intersection Improvement		COG-Sales Tax	\$46,500								\$46,500	\$46,500
3200 S. Hwy 165	Nibley	Intersection engineering design study		COG-Sales Tax	\$186,000								\$186,000	\$186,000
3200 S. Hwy 89-91	Logan	Intersection engineering design study		COG-Sales Tax	\$93,000								\$93,000	\$93,000
100 West, South extension	Logan	Engineering design study		COG-Sales Tax	\$93,000								\$93,000	\$93,000
<b>2014 Funded COG Sales Tax Projects (non-federal PROJECTS NOT TO BE INCLUDED IN STIP)</b>														
2600 S. Hwy 165 Intersection	Nibley	Intersection Improvement		COG-Sales Tax	\$200,000								\$200,000	\$200,000
1400 N. 600 W. Intersection	Logan	Intersection Improvement		COG-Sales Tax	\$200,000								\$200,000	\$200,000
550 N (2300 S) Realign to 450 N	Millville	Realign roadway		COG-Sales Tax	\$200,000								\$200,000	\$200,000
3100 N-200 East to Hwy 91	No. Logan/HP	Roadway Construction		COG-Sales Tax	\$200,000								\$200,000	\$200,000
3200 So. Hwy 89/91	Logan	Intersection Improvement		COG-Sales Tax	\$1,456,000								\$1,456,000	\$1,456,000
400 East	Hyde Park	Roadway Construction		COG-Sales Tax	\$200,000								\$200,000	\$200,000
Hammer Road SR 101 Intersection	Hyrum	Intersection Improvement		COG-Sales Tax	\$200,000								\$200,000	\$200,000
1200 East	No Logan	Roadway Construction		COG-Sales Tax	\$205,799								\$205,799	\$205,799
Maughan's Corner	Cache Co	Intersection engineering design		COG-Sales Tax	\$32,550								\$32,550	\$32,550
<b>COG PROJECT(S) TOTAL</b>											<b>\$0</b>	<b>\$0</b>	<b>\$8,135,551</b>	<b>\$8,135,551</b>
<b>*Projects listed in BLUE are UDOT sponsored projects and may be located outside the Logan Urbanized Area in Cache County.</b>											<b>\$18,689,542</b>	<b>\$2,000,000</b>	<b>\$11,925,736</b>	<b>\$30,615,278</b>
<b>ROAD PROJECT TOTALS</b>											<b>\$18,689,542</b>	<b>\$2,000,000</b>	<b>\$11,925,736</b>	<b>\$30,615,278</b>



**Transit, ITS, Air Quality, Active Transportation Projects**  
**Logan Urbanized Area**

Project	Sponsor	Project Concept	PIN	Fund Source	Approved Funds					Concept Development	Federal Aid	State	Local	Total
					Prior Oblig.	2016	2017	2018	2019					
<b>Air Quality Improvement</b>														
Congestion Mitigation Air Quality	Logan City	Diesel Engine Emission Reduction Retrofits		CMAQ_Cache	\$59,500						\$59,500			\$59,500
Congestion Mitigation Air Quality	Logan City	Diesel Engine Emission Reduction Retrofits		State DAQ	\$6,736							\$6,736		\$6,736
Congestion Mitigation Air Quality	BR Health	Air Quality Public Education and Outreach		CMAQ_Cache	\$55,000						\$55,000			\$55,000
Congestion Mitigation Air Quality	BR Health	Air Quality Public Education and Outreach		BRHD	\$3,994							\$3,994		\$3,994
Congestion Mitigation Air Quality	UDOT Travelwise	Cache "Clear the Air" Challenge		CMAQ_Cache	\$15,000						\$15,000			\$15,000
Congestion Mitigation Air Quality	UDOT Travelwise	Cache "Clear the Air" Challenge		UDOT	\$1,500							\$1,500		\$1,500
Congestion Mitigation Air Quality	BR Health	IM Program Design and Implementation	10652	CMAQ_Cache	\$1,087,774						\$1,014,132		\$73,642	\$1,087,774
Congestion Mitigation Air Quality	Logan City	Traffic Signal Coordination	11884	CMAQ_Cache	\$200,000						\$200,000			\$200,000
Congestion Mitigation Air Quality	Logan City	Traffic Signal Coordination	11884	Local_Govt	\$120,000								\$120,000	\$120,000
Congestion Mitigation Air Quality	CVTD	Installation of Covered Bike Storage	FTA Transfer	CMAQ_Cache	\$134,470						\$125,366		\$9,104	\$134,470
Congestion Mitigation Air Quality	USU	Aggie Blue Bikes Capital Improvements	13154	ST_PVMT	\$96,171							\$89,660	\$6,511	\$96,171
<b>AIR QUALITY PROJECT(S) TOTAL</b>											<b>\$1,468,998</b>	<b>\$97,896</b>	<b>\$213,251</b>	<b>\$1,780,145</b>
<b>Active Transportation Projects</b>														
800 West Trail, Nibley/Logan	Cache County	Develop Trail Logan to Nibley (Region TAP)	13364	ST_PVMT		\$140,000						\$140,000		\$140,000
800 West Trail, Nibley/Logan	Cache County	Develop Trail Logan to Nibley (Region TAP)	13364	Local_Govt		\$53,000							\$53,000	\$53,000
<b>ACTIVE TRANSPORTATION PROJECT(S) TOTAL</b>											<b>\$0</b>	<b>\$140,000</b>	<b>\$53,000</b>	<b>\$193,000</b>
<b>Public Transit Funding</b>														
Replacement para-transit buses	CVTD	Replace para-transit buses	FTA 5307		\$128,000				\$212,000	\$216,000	\$556,000			\$556,000
			CVTD Local Match		\$32,000				\$53,000	\$54,000			\$139,000	\$139,000
Replacement buses	CVTD	Replace fixed route buses	FTA 5307, 5339			\$680,000			\$1,044,000	\$1,860,000	\$3,584,000			\$3,584,000
			CVTD Local Match			\$170,000			\$261,000	\$465,000			\$896,000	\$896,000
Preventative Maintenance	CVTD	Transit preventative maintenance program	FTA 5307, 5311		\$664,000	\$680,000	\$680,000	\$700,000	\$1,400,000	\$4,124,000				\$4,124,000
			CVTD Local Match		\$166,000	\$170,000	\$170,000	\$175,000	\$350,000			\$1,031,000	\$1,031,000	
Replace support vehicles and equipment	CVTD	Replace support vehicle and equipment	FTA 5307					\$20,000		\$20,000				\$20,000
			CVTD Local Match					\$5,000					\$5,000	\$5,000
Operating Assistance	CVTD	Transit system operation	FTA 5307, 5311		\$1,000,000	\$1,000,000	\$1,200,000	\$1,200,000	\$2,700,000	\$7,100,000				\$7,100,000
			CVTD Local Match		\$1,000,000	\$1,000,000	\$1,200,000	\$1,200,000	\$2,700,000			\$7,100,000	\$7,100,000	
Facility expansion	CVTD	Expand facility capacity to meet service demand increases	FTA 5339			\$80,000				\$80,000				\$80,000
			CVTD Local Match			\$20,000							\$20,000	\$20,000
Facility expansion	CVTD	Expand facility capacity to meet service demand increases	FTA 5339*				\$800,000	\$800,000		\$1,600,000				\$1,600,000
			CVTD Local Match				\$200,000	\$200,000					\$400,000	\$400,000
Transit Planning	CVTD	Short range transit plan	FTA 5307		\$185,000					\$200,000	\$385,000			\$385,000
			CVTD Local Match		\$47,000					\$50,000			\$97,000	\$97,000
Security Contracts and Equipment	CVTD	Purchase security equipment and security improvements	FTA 5307		\$10,000	\$10,000	\$10,000	\$10,000	\$20,000	\$60,000				\$60,000
			CVTD Local Match		\$2,500	\$2,500	\$2,500	\$2,500	\$5,000			\$15,000	\$15,000	
	CVTD	Maintain security contract	FTA 5307		\$12,000	\$12,000	\$12,000	\$12,000	\$24,000	\$72,000				\$72,000
			CVTD Local Match		\$12,000	\$12,000	\$12,000	\$12,000	\$24,000			\$72,000	\$72,000	
<b>TRANSIT PROJECT(S) TOTAL</b>											<b>\$17,581,000</b>	<b>\$0</b>	<b>\$9,775,000</b>	<b>\$27,356,000</b>
<b>* 5339 Bus and Bus Facilities (This is the previous 5309 funding)</b>					<b>TRANSIT, ITS, AIR QUALITY, ACTIVE TRANSPORTATION PROJECT(S) TOTAL</b>					<b>\$19,049,998</b>	<b>\$237,896</b>	<b>\$10,041,251</b>	<b>\$29,329,145</b>	

CMPO - 2016 TIP DRAFT

## List of Acronyms

ADT	Average Daily Traffic
CAAA	Clean Air Act Amendments
CMPO	Cache Metropolitan Planning Organization
COG	Cache Council of Governments
CTAC	Cache Technical Advisory Committee
CVTD	Cache Valley Transit District
DOT	U.S. Department of Transportation
EPA	U.S. Environmental Protection Agency
FHWA	Federal Highway Administration
FTA	Federal Transit Administration
HPMS	Highway Performance Management System
IDOT	Idaho Department of Transportation
IDEQ	Idaho Department of Environmental Quality
MPO	Metropolitan Planning Organization
NAAQS	National Ambient Air Quality Standard
NEPA	National Environmental Policy Act
PM 2.5	Particulate Matter less than 2.5 micrometers
RTP	Regional Transportation Plan
SIPs	State Implementation Plans
STIP	Statewide Transportation Improvement Program
STP	Federal Surface Transportation Program Funds
TIP	Transportation Improvement Program
VMT	Vehicle Miles Traveled