



**Cache County Council of Government**  
Transportation Project Prioritization 2014

**Hyrum City**  
Hammer Road Intersection Realignment

# Purpose

- Change the alignment of Hammer Road to eliminate the oblique intersection
- Increase the site distance for left turn movements onto SR101
- Better define the intersection and make it easier to negotiate from SR101

# Need – Improve Safety

- Mountain Fiber recycling facility receives recyclables from the region
- Cedar Valley Trucking facility is located outside of Hyrum City boundary but generates semi-truck and passenger vehicle traffic
- Local business traffic on Hammer Road from SR101 will continue to increase (Blacksmith Fork Business Park)
- Local farmers use SR101 and Hammer Road for their dairy and farming operations.
- Hammer Road connects the 300 South Trail from Hyrum State Park to SR101 and the Blacksmith Fork Trail.

# Scoring Considerations

- Cost Effectiveness
- Federal Compliance
- Overall Economic Impact

# Cost Effectiveness

- O&M Cost Savings: 25% reduction in pavement surface
- Cost per lane mile: Approximately \$885k
- Benefit/Cost: Safety

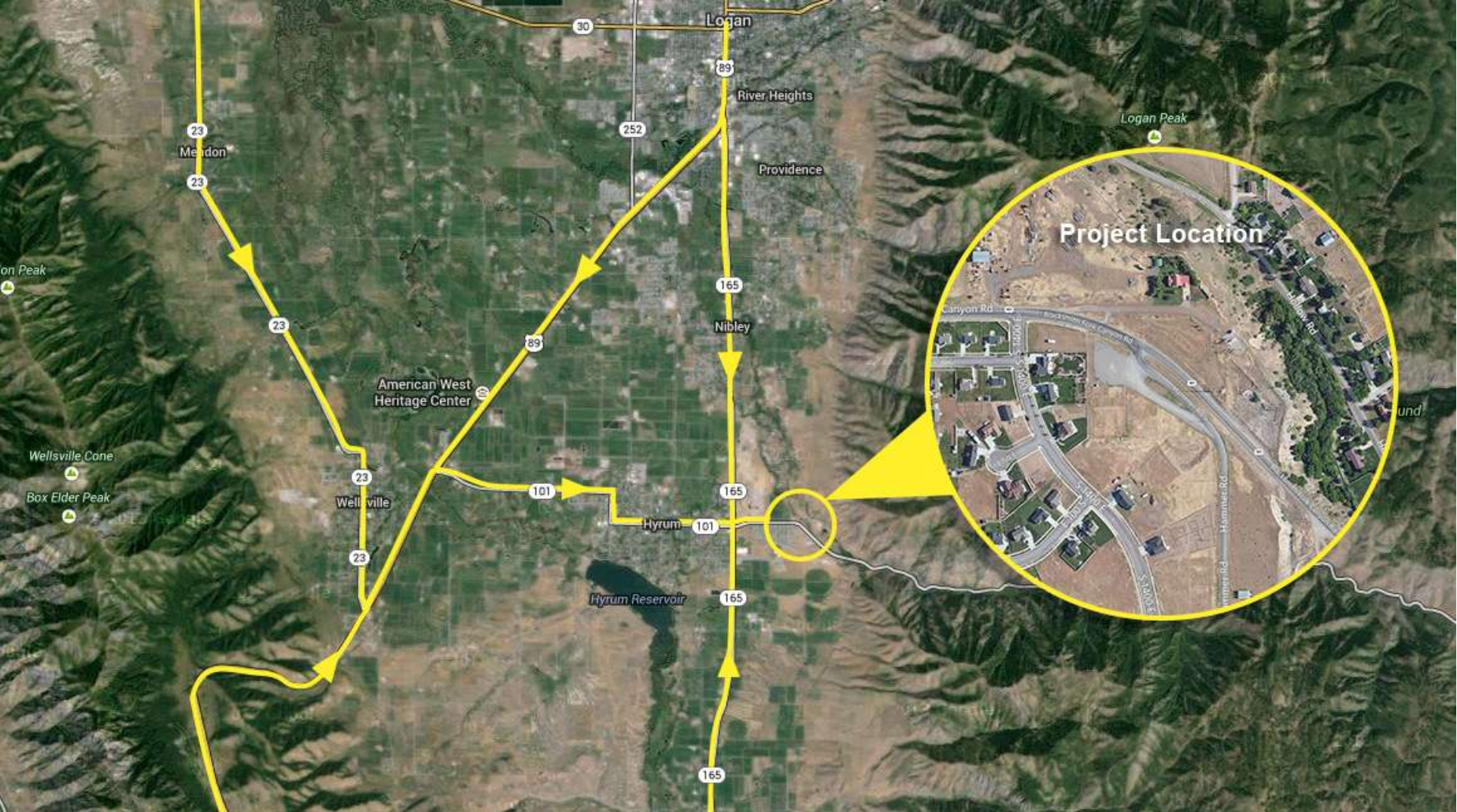
# Federal Compliance

- Yes
- Concept approval from UDOT

# Overall Economic Impact

- Improved accessibility will facilitate business development along the Hammer Road commercial corridor and Blacksmith Fork Business Park
- Fewer accidents at the improved intersection will reduce liability and the potential for legal costs

# Regional Overview



HAMMER ROAD INTERSECTION REALIGNMENT





# Intersection Overview



HAMMER ROAD INTERSECTION REALIGNMENT



# Proposed Realignment

