

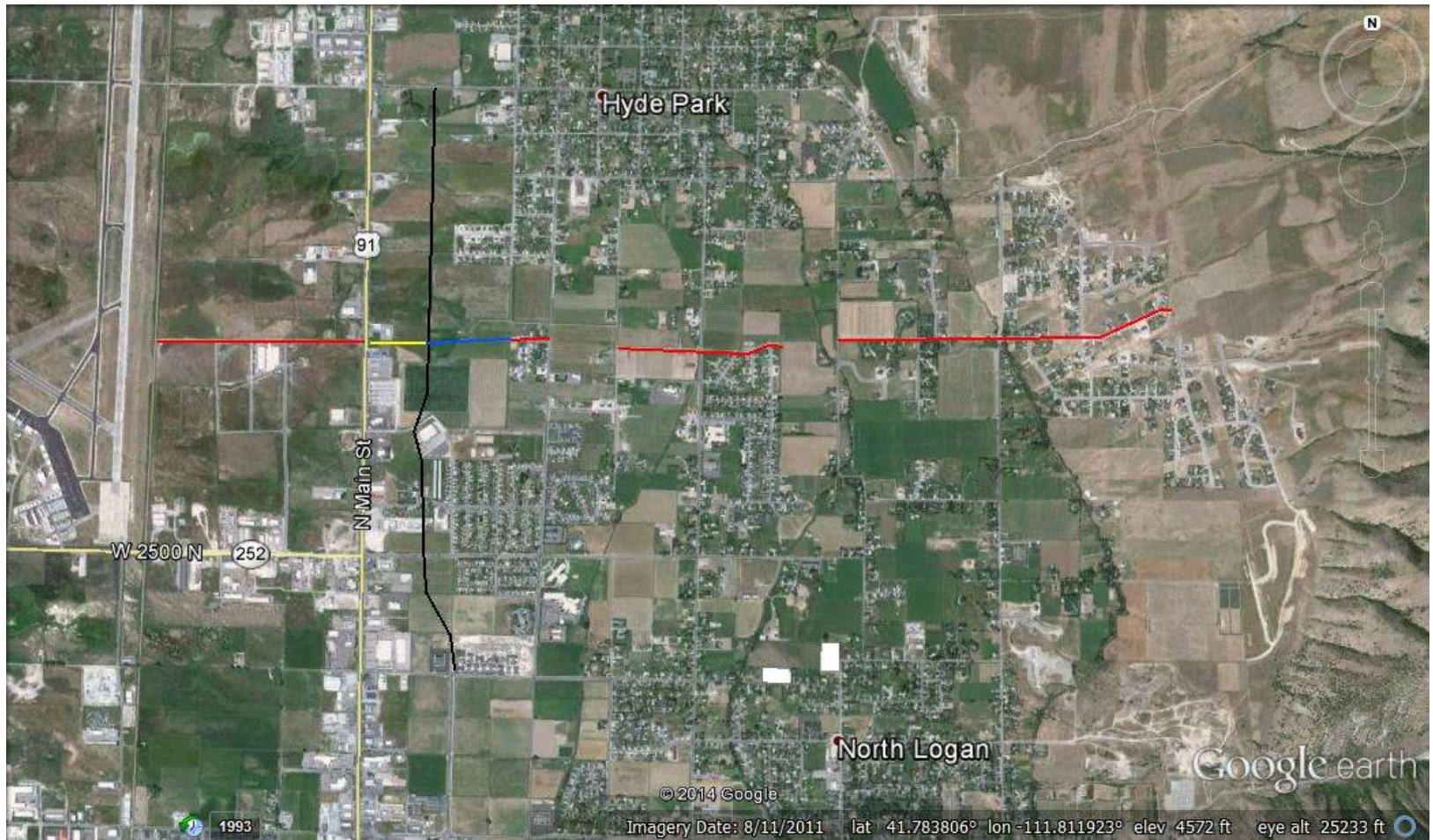
3100 North -
Main Street (Hwy 91) to 200 East

Combined North Logan City and Hyde
Park

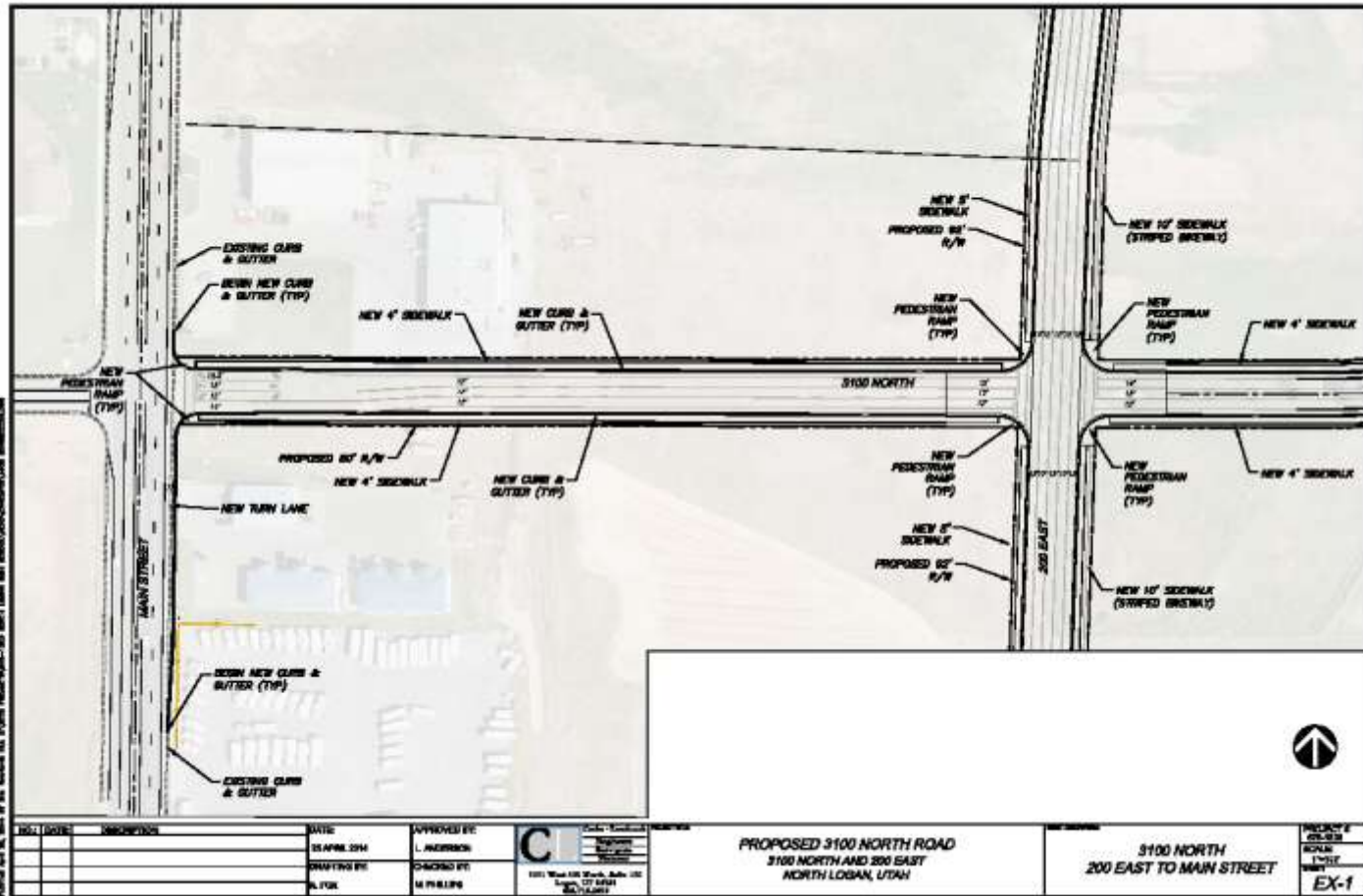
Project Overview

- About 1,000 feet of roadway
 - Acquire right-of-way – Main Street Property
 - Connects to Logan to Hyde Park – 200 East Corridor
 - Will provide access off Main Street to new High School between NLC and HP
 - Part of major east/west arterial through North Logan and Hyde Park which has potential to alleviate N/S traffic from 1600 E, 1200 E, 800 E

3100 N. Master Planned Road



Rough design layout



Request for funds (in priority order)

- Total Project - \$770,500 (3% inflation, does not include utilities)
 1. Right of way ~ \$232,000 (assessed value)
 2. Engineering \$23,000
 3. Construction \$423,300
 4. Contingency and other \$69,800
 - Local Match \$100,000 ~ 13%
- Utilities \$121,000 by NLC & HP