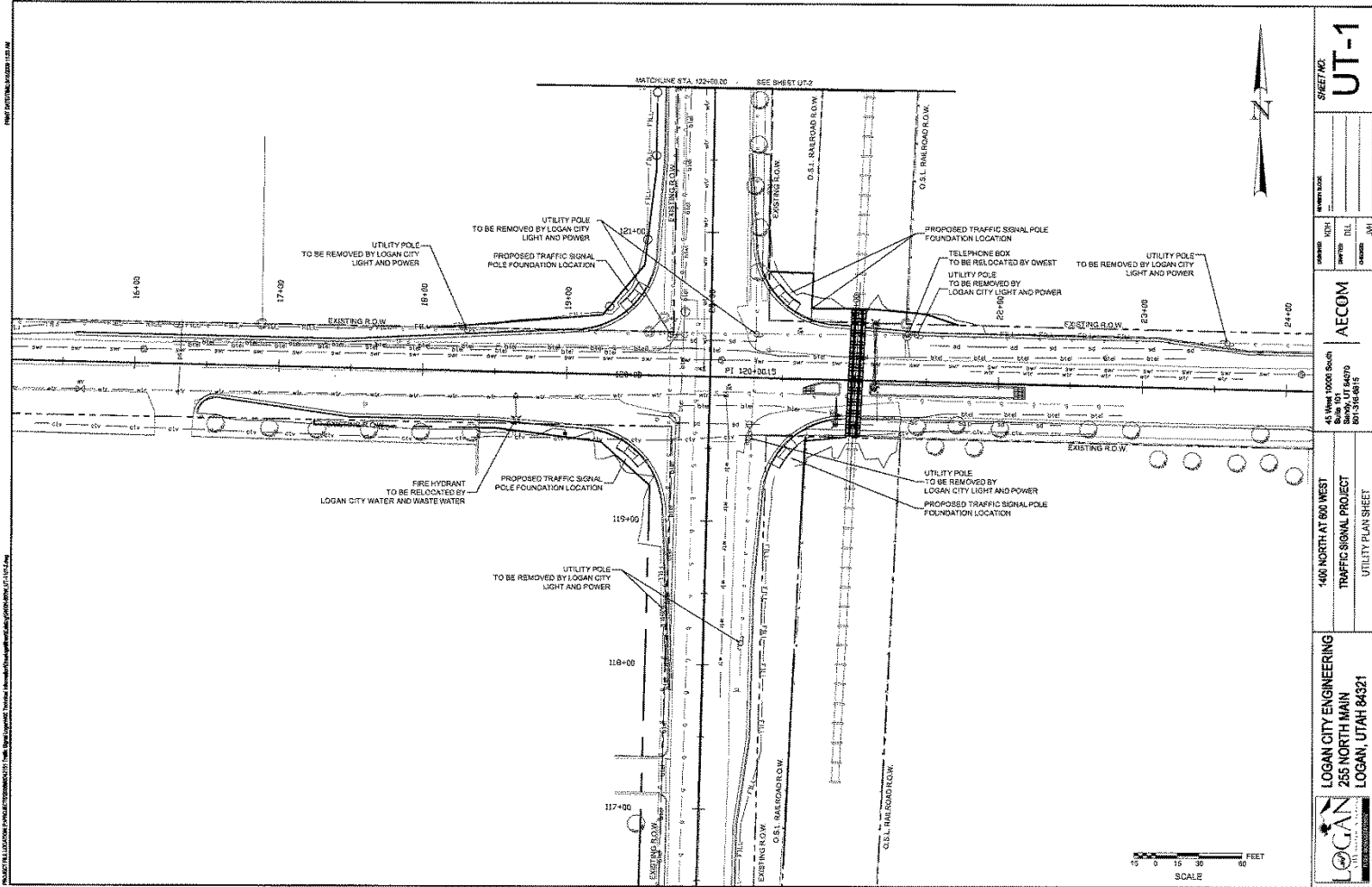


# CCCOG Application 1400 North 600 West

City of Logan  
April 2014

# Site Plan



# Estimated Costs



1400 N 800 W INT PRJ  
80042151

ENGINEER ESTIMATE

ORIGINATED: DLL  
CHECKED: HSH  
12/8/2010

1400 NORTH 800 WEST INTERSECTION IMPROVEMENT PROJECT  
Engineer Cost Estimate

## BID ITEMS

### REMOVAL

ITEM	QUANTITY	UNIT	UNIT PRICE	QUANTITY	AMOUNT
REMOVE CONCRETE CURB AND GUTTER	FT		\$ 11.00	309	\$ 3,399.04
REMOVE CONCRETE SIDEWALK	SQ YD		\$ 48.00	45	\$ 1,814.40
REMOVE ASPHALT PAVEMENT	SQ YD		\$ 3.75	4,097	\$ 15,362.16
REMOVE FENCE	FT		\$ 4.00	730	\$ 2,920.82
RELOCATE SURVEY MONUMENT	EACH		\$ 450.00	1	\$ 450.00
REMOVE CATCH BASIN	EACH		\$ 750.00	2	\$ 1,500.00
REMOVE TREE	EACH		\$ 510.00	3	\$ 1,530.00
<b>SUBTOTAL:</b>					<b>\$ 27,006.43</b>

### ROADWAY

ITEM	QUANTITY	UNIT	UNIT PRICE	QUANTITY	AMOUNT
ROADWAY EXCAVATION (PLAN QUANTITY)	CU YD		\$ 20.00	3,935	\$ 78,700.00
EMBANKMENT	CU YD		\$ 10.00	1,353	\$ 13,527.60
BORROW	CU YD		\$ 14.00	638	\$ 7,832.00
GRANULAR BORROW	Ton		\$ 22.00	4,973	\$ 109,414.40
UNTREATED BASE COURSE	Ton		\$ 20.00	3,803	\$ 76,065.72
LIQUID ASPHALT	Ton		\$ 1,000.00	6	\$ 5,971.28
HWA - 3/4 INCH	Ton		\$ 110.00	1,949	\$ 214,383.37
CONCRETE CURB & GUTTER TYPE A	FT		\$ 23.50	2,762	\$ 65,384.15
CONCRETE CURB TYPE G	FT		\$ 28.00	249	\$ 6,977.53
CONCRETE SIDEWALK	SQ YD		\$ 68.00	75	\$ 4,888.43
PEDESTRIAN ACCESS RAMP	EACH		\$ 2,000.00	4	\$ 8,000.00
CONCRETE FLATWORK 8 INCH THICK	SQ FT		\$ 6.50	790	\$ 5,137.00
PLOWABLE END SECTIONS	EACH		\$ 1,500.00	2	\$ 3,000.00
RIGHT-OF-WAY FENCE, TYPE A (WOOD POST)	FT		\$ 10.00	884	\$ 8,842.85
<b>SUBTOTAL:</b>					<b>\$ 545,804.40</b>

### SIGNING

ITEM	QUANTITY	UNIT	UNIT PRICE	QUANTITY	AMOUNT
TYPE A-1 SIGN 12 X 30	EACH		\$ 450.00	2	\$ 900.00
TYPE A-1 SIGN 24 X 30	EACH		\$ 450.00	2	\$ 900.00
TYPE A-1 SIGN 24 X 30	EACH		\$ 450.00	2	\$ 900.00
SIGN POST P4	EACH		\$ 180.00	8	\$ 1,440.00
RELOCATE SIGN < THAN 20 SQ FEET	EACH		\$ 365.00	4	\$ 1,460.00
REMOVE SIGN < THAN 20 SQ FEET	EACH		\$ 130.00	8	\$ 1,040.00
<b>SUBTOTAL:</b>					<b>\$ 6,720.00</b>

### STRIPING

ITEM	QUANTITY	UNIT	UNIT PRICE	QUANTITY	AMOUNT
PAVEMENT MARKING PAINT	QUARTON		\$ 60.00	30	\$ 2,400.00
PAVEMENT MESSAGE	EACH		\$ 25.00	28	\$ 700.00
PAVEMENT MARKING PAINT 12" STOP BARS, CROSSWALKS	FT		\$ 1.25	901	\$ 1,126.25
REMOVE PAVEMENT MARKINGS	FT		\$ 0.50	1,452	\$ 726.00
<b>SUBTOTAL:</b>					<b>\$ 4,952.25</b>

### LUMP SUM

ITEM	QUANTITY	UNIT	UNIT PRICE	QUANTITY	AMOUNT
SIGNAL SYSTEM	LUMP		\$ 122,188.42	1	\$ 122,188.42
Traffic Control	LUMP		\$ 10,000.00	1	\$ 10,000.00
SURVEY	LUMP		\$ 10,000.00	1	\$ 10,000.00
MOBILIZATION	LUMP		\$ 10,000.00	1	\$ 10,000.00
<b>SUBTOTAL:</b>					<b>\$ 152,188.42</b>

**BID ITEMS TOTAL: \$ 836,671.33**

## NON-BID ITEMS

ITEM	UNIT	UNIT PRICE	QUANTITY	AMOUNT
Construction Engineering	LUMP	\$10,000.00	1	\$10,000.00
Power Pole Relocation	LUMP	\$400,000.00	1	\$400,000.00
Railroad System	LUMP	\$510,000.00	1	\$510,000.00
Contingency (10%)	LUMP	\$83,667.00	1	\$83,667.00

**NON-BID ITEMS TOTAL: \$1,003,667.00**

**GRAND TOTAL \$1,840,338.33**

Preliminary Engineering	\$0.00
Environmental Work	\$0.00
Construction	\$1,830,338.33
Right of Way	\$100,000.00
Construction Engineering	\$10,000.00
Total Cost	\$1,940,338.33
Inflation Cost Factor	Yrs 2 @ 3%
Total Inflated Cost	\$2,015,710.00