

Memorandum



To: Christopher Lizotte, Environmental Manager
UDOT, Region 1

From: Paul W. West, Environmental Biologist
UDOT Environmental Services

Date: July 12, 2010

Re: HPP-LC05(29) – 200 East Minor Arterial, Logan City, Cache County (PIN 5469)

CC: Rebecka Stromness – UDOT, Environmental Services
Ed Woolford – FHWA
Scott Walker – UDWR Northern Region
Pam Kramer – UDWR Northern Region

Encls.

I understand the Utah Department of Transportation (UDOT), is proposing to provide connectivity, correct geometric deficiencies, and improve operational deficiencies to allow 200 East to function as a Major Collector and a regional facility, as designated by the Cache Metropolitan Planning Organization (CMPO), Long Range Transportation Plan (LRTP) and the Logan City's transportation plan (see location map). The section of 200 East evaluated in the EA for this project is classified by Logan City as a collector with three lanes, providing left-turn lanes at the intersections between Main Street and 600 East.

A review of the Utah Division of Wildlife Resources, Natural Heritage Program (UDWR/NHP) database indicates that no federally listed, threatened, endangered or candidate species, or any critical habitat would be affected by these projects.

In accordance with the U.S. Fish and Wildlife Service memo dated January 27, 2006, we are not required to obtain concurrence letters from them for "no-effect" determinations. Therefore, this memo is issued in-lieu of their concurrence for your environmental documentation.

I have also evaluated the above-referenced project with regard to wildlife issues as required on the UDOT Environmental Study Form. Based on the UDWR/NHP database; UDOT's Traffic and Safety data (2003 to 2005); and UDOT's Wildlife Connectivity database (2006), I feel this project should have no effect to state-sensitive species, important wildlife habitat, big game migration routes, habitat connectivity, or fish passage.

If you have any questions, please call me at 801-633-8747, or email me at paulwest@utah.gov.

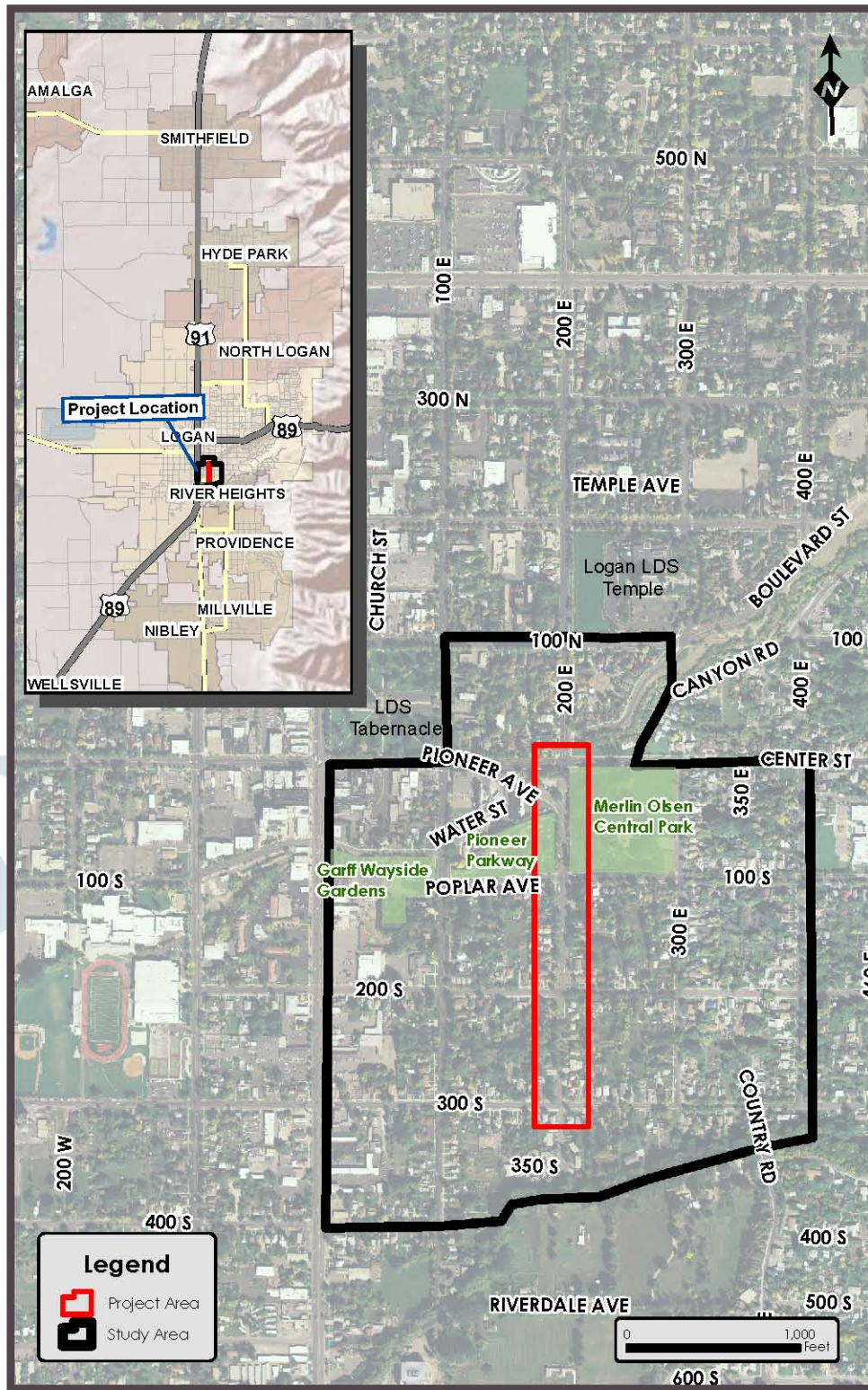


Figure 1.2-1, Study and Project Area